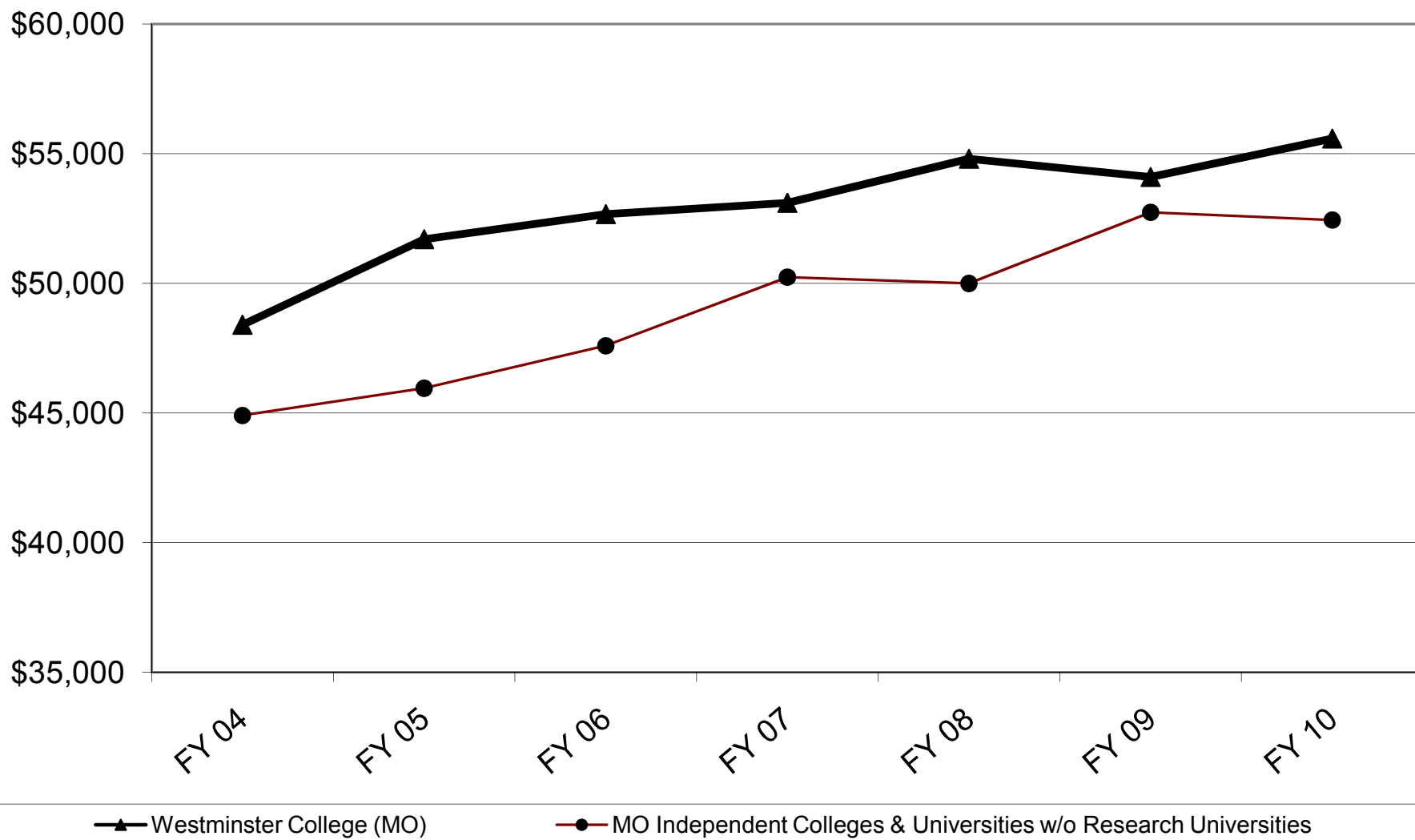


Average Salary All Ranks



MO Independents: Faculty Salary History and Comparison (without benefits)

	FY 01	FY 02	FY 03	FY 04	FY 05	FY 06	FY 07	FY 08	FY 09	FY 10
Avilla University										
Professor	\$48,600	\$51,600	\$54,700	\$56,700	\$55,900	\$57,483	\$57,900	\$59,000	\$59,800	\$59,600
Associate Professor	\$43,000	\$43,800	\$45,900	\$48,000	\$48,000	\$51,000	\$50,800	\$53,100	\$57,700	\$57,700
Assistant Professor	\$37,600	\$38,700	\$40,000	\$41,400	\$41,800	\$43,700	\$44,600	\$46,100	\$49,600	\$50,700
Instructor	n.a.	\$35,300	n.a.	\$39,300	\$36,800	\$39,000	\$42,500	\$44,900	\$45,900	\$44,900
All Ranks	\$40,500	\$42,100	\$44,200	\$46,000	\$46,400	\$48,400	\$49,100	\$50,700	\$53,300	\$53,900
Central Methodist University										
Professor	n.a.	\$47,600	\$48,000	\$50,800	\$50,000	\$50,777	\$51,800	\$53,600	\$56,100	\$58,300
Associate Professor	n.a.	\$40,100	\$38,400	\$39,200	\$38,900	\$39,572	\$41,400	\$43,700	\$45,600	\$48,300
Assistant Professor	n.a.	\$34,100	\$33,500	\$34,500	\$34,700	\$35,735	\$37,300	\$38,100	\$39,500	\$41,100
Instructor	n.a.	\$29,700	\$31,300	\$29,200	n.a.	n.a.	n.a.	n.a.	n.a.	n.a.
All Ranks	n.a.	\$39,300	\$39,100	\$39,500	\$39,600	\$40,900	\$42,400	\$43,100	\$44,300	\$45,800
College of the Ozarks										
			(2)					(1)		
Professor	\$52,000	\$52,700	\$53,837	\$53,700	\$55,400	\$57,126	\$71,300	\$58,571	\$59,400	\$61,800
Associate Professor	\$47,000	\$47,700	\$49,250	\$49,500	\$51,200	\$51,308	\$68,100	\$53,949	\$55,500	\$56,400
Assistant Professor	\$40,200	\$41,800	\$42,883	\$43,700	\$45,800	\$46,200	\$57,500	\$47,687	\$47,300	\$50,700
Instructor	n.a.	n.a.	n.a.	n.a.	\$38,000	n.a.	\$40,161	n.a.	n.a.	\$42,800
All Ranks	\$45,800	\$46,200	\$47,362	\$47,600	\$49,500	\$50,739	\$65,100	\$52,732	\$53,700	\$55,900
Columbia College										
Professor	\$47,800	\$48,500	\$52,300	\$57,000	\$59,800	\$63,000	\$83,500	\$72,100	\$78,000	\$79,400
Associate Professor	\$41,500	\$43,400	\$47,800	\$50,600	\$54,600	\$55,800	\$68,000	\$58,900	\$61,300	\$63,500
Assistant Professor	\$39,000	\$40,300	\$40,400	\$43,400	\$45,200	\$47,000	\$59,600	\$48,900	\$51,600	\$52,600
Instructor	\$35,200	\$36,100	\$37,600	\$41,600	\$40,400	\$43,900	\$60,400	\$51,800	\$48,200	\$49,400
All Ranks	\$41,500	\$41,700	\$43,500	\$46,800	\$48,600	\$51,300	\$65,600	\$56,600	\$58,800	\$60,000
Culver-Stockton College										
			(2)							
Professor	\$45,200	\$47,800	\$50,757	\$54,200	\$53,000	\$51,300	\$53,600	\$57,000	\$57,400	\$57,200
Associate Professor	\$42,000	\$43,500	\$44,954	\$47,000	\$45,600	\$46,000	\$48,100	\$49,900	\$49,100	\$48,300
Assistant Professor	\$36,600	\$37,800	\$39,080	\$41,100	\$39,300	\$38,900	\$41,200	\$42,700	\$43,000	\$42,900
Instructor	n.a.	\$28,600	n.a.	\$32,400	\$32,600	n.a.	\$34,200	\$37,800	n.a.	n.a.
All Ranks	\$39,300	\$40,800	\$42,515	\$44,600	\$43,800	\$43,700	\$45,300	\$47,300	\$48,900	\$48,600
Drury University										
Professor	\$60,500	\$60,800	\$58,000	\$62,100	\$62,700	\$66,800	\$68,400	\$67,200	\$71,900	\$72,700
Associate Professor	\$48,400	\$50,500	\$51,500	\$52,000	\$52,900	\$54,200	\$54,400	\$52,800	\$54,100	\$54,000
Assistant Professor	\$40,700	\$40,800	\$42,200	\$42,300	\$41,000	\$45,900	\$46,800	\$48,400	\$52,000	\$52,700
Instructor	\$38,200	\$39,500	n.a.	\$41,700	\$40,800	\$36,500	\$36,400	\$40,600	\$39,000	\$42,300
All Ranks	\$47,200	\$48,000	\$48,400	\$49,500	\$49,600	\$52,900	\$54,400	\$54,800	\$56,700	\$57,300
Evangel University										
				(1)				(1)		
Professor	n.a.	n.a.	n.a.	\$46,153	n.a.	n.a.	n.a.	\$48,462	n.a.	n.a.
Associate Professor	n.a.	n.a.	n.a.	\$39,862	n.a.	n.a.	n.a.	\$41,294	n.a.	n.a.
Assistant Professor	n.a.	n.a.	n.a.	\$36,727	n.a.	n.a.	n.a.	\$34,451	n.a.	n.a.
Instructor	n.a.	n.a.	n.a.	n.a.	n.a.	n.a.	n.a.	\$25,536	n.a.	n.a.
All Ranks	n.a.	n.a.	n.a.	\$40,221	n.a.	n.a.	n.a.	\$40,614	n.a.	n.a.
Fontbonne University										
			(1)	(1)	(1)		(1)			
Professor	n.a.	\$57,600	\$59,000	\$58,610	\$64,719	\$68,591	\$72,600	\$70,979	n.a.	n.a.
Associate Professor	n.a.	\$45,900	\$46,700	\$47,453	\$50,218	\$52,432	\$57,100	\$55,201	n.a.	n.a.
Assistant Professor	n.a.	\$39,700	\$40,100	\$40,069	\$42,712	\$44,464	\$47,800	\$44,385	n.a.	n.a.
Instructor	n.a.	\$35,700	\$36,100	\$35,226	\$37,258	\$37,708	\$38,800	\$44,187	n.a.	n.a.
All Ranks	n.a.	\$42,800	\$43,800	\$45,994	\$47,469	\$49,691	\$51,500	\$53,654	n.a.	n.a.
Hannibal-LaGrange College										
			(2)	(1)	(1)	(1)	(2)	(1)		
Professor	n.a.	\$41,200	\$43,625	\$47,195	\$47,051	\$48,371	\$49,642	\$49,239	n.a.	\$48,000
Associate Professor	n.a.	\$34,900	\$35,842	\$37,760	\$38,886	\$39,630	\$42,041	\$40,756	n.a.	\$41,800
Assistant Professor	n.a.	\$35,200	\$33,893	\$35,408	\$35,823	\$37,233	\$38,201	\$39,288	n.a.	\$39,100
Instructor	n.a.	\$28,800	n.a.	\$30,460	\$29,604	\$32,039	n.a.	\$33,141	n.a.	\$38,100
All Ranks	n.a.	\$34,800	\$34,729	\$36,390	\$37,018	\$38,946	\$39,521	\$40,190	n.a.	\$41,100
Lindenwood University										
		(2)	(2)	(1)	(1)	(1)	(2)	(1)		
Professor	n.a.	\$62,671	\$64,392	\$63,418	\$67,353	\$68,313	\$54,422	\$65,135	n.a.	\$70,200
Associate Professor	n.a.	\$48,046	\$50,988	\$52,790	\$55,152	\$57,059	\$50,134	\$53,853	n.a.	\$61,500
Assistant Professor	n.a.	\$42,145	\$41,915	\$43,908	\$45,633	\$47,386	\$43,372	\$46,726	n.a.	\$50,700
Instructor	n.a.	n.a.	n.a.	n.a.	n.a.	n.a.	n.a.	n.a.	n.a.	\$58,900
All Ranks	n.a.	\$49,520	\$50,644	\$52,182	\$54,273	\$56,584	\$49,347	\$52,637	n.a.	\$57,800
Maryville University										
		(2)								
Professor	\$57,000	\$57,462	\$58,700	\$61,400	\$63,800	\$66,000	\$67,700	\$71,700	\$73,500	\$73,600
Associate Professor	\$47,300	\$48,894	\$49,800	\$51,500	\$53,600	\$55,200	\$58,300	\$60,200	\$61,500	\$61,400
Assistant Professor	\$41,100	\$44,165	\$44,400	\$46,800	\$48,000	\$49,500	\$50,800	\$52,200	\$53,700	\$54,300
Instructor	n.a.	n.a.	n.a.	n.a.	\$42,200	\$44,700	\$45,300	\$46,700	n.a.	n.a.
All Ranks	\$47,200	\$48,840	\$49,900	\$51,900	\$53,100	\$54,600	\$56,300	\$58,300	\$59,800	\$60,200
Missouri Baptist University										
Professor	n.a.	\$38,300	\$38,700	\$42,100	\$42,400	\$48,100	\$50,400	\$51,900	\$53,300	\$53,600
Associate Professor	\$37,300	\$35,600	\$36,000	\$43,800	\$46,200	\$47,700	\$45,400	\$44,900	\$46,500	\$47,700
Assistant Professor	\$37,300	\$36,100	\$34,300	\$39,200	\$40,800	\$40,600	\$36,600	\$38,600	\$40,000	\$40,300
Instructor	\$33,200	\$33,200	\$33,700	\$34,900	\$35,700	\$33,400	\$35,200	\$36,100	\$38,100	\$38,600
All Ranks	\$36,100	\$35,200	\$35,100	\$39,200	\$40,400	\$40,400	\$40,900	\$41,900	\$44,300	\$45,000
Missouri Valley College										
		(2)	(2)	(2)						
Professor	n.a.	\$39,669	\$38,688	\$41,056	\$45,900	\$45,600	\$47,800	\$44,800	n.a.	n.a.
Associate Professor	n.a.	\$38,831	\$38,009	\$38,027	\$41,300	\$41,500	\$44,300	\$44,800	n.a.	n.a.
Assistant Professor	n.a.	\$33,434	\$35,467	\$37,114	\$37,100	\$37,700	\$38,100	\$37,400	n.a.	n.a.
Instructor	n.a.	n.a.	n.a.	n.a.	\$29,000	\$29,800	\$30,500	\$29,400	n.a.	n.a.
All Ranks	n.a.	\$35,165	\$35,977	\$37,344	\$37,100	\$37,031	\$37,900	\$37,200	n.a.	n.a.

MO Independents: Faculty Salary History and Comparison (without benefits)

	FY 01	FY 02	FY 03	FY 04	FY 05	FY 06	FY 07	FY 08	FY 09	FY 10
Park University										
Professor	n.a.	(2)	(2)	(1)	(1)	(1)	(2)	(1)		
Associate Professor	\$53,074	\$52,590	\$58,510	\$56,828	\$66,545	\$57,260	\$72,645	n.a.	n.a.	n.a.
Assistant Professor	\$43,099	\$44,886	\$46,110	\$47,280	\$60,283	\$53,971	\$59,979	n.a.	n.a.	n.a.
Instructor	\$37,520	\$38,966	\$40,725	\$41,271	\$44,761	\$45,472	\$47,594	n.a.	n.a.	n.a.
All Ranks	n.a.	n.a.	n.a.	n.a.	\$34,305	n.a.	\$37,078	n.a.	n.a.	n.a.
	\$40,762	\$42,701	\$44,898	\$45,799	\$52,593	\$50,139	\$55,274	n.a.	n.a.	
Rockhurst University										
Professor	\$65,100	\$66,200	\$63,500	\$60,500	\$64,600	\$66,400	\$67,100	\$68,900	\$71,300	\$71,000
Associate Professor	\$52,000	\$52,000	\$52,200	\$51,400	\$52,100	\$55,700	\$56,800	\$56,900	\$55,600	\$56,600
Assistant Professor	\$40,100	\$41,100	\$42,300	\$44,900	\$47,700	\$50,500	\$50,400	\$51,500	\$50,200	\$50,200
Instructor	n.a.	n.a.	\$36,800	\$35,200	\$36,000	\$38,400	\$40,200	\$44,100	\$38,900	\$41,400
All Ranks	\$49,500	\$50,500	\$50,800	\$50,800	\$53,300	\$55,914	\$56,700	\$57,000	\$56,300	\$57,200
St. Louis University										
Professor	\$84,900	\$88,000	\$89,600	\$92,200	\$94,700	\$97,200	\$99,800	\$103,700	\$107,400	\$107,700
Associate Professor	\$59,800	\$62,300	\$62,500	\$63,800	\$64,600	\$66,800	\$67,500	\$70,400	\$72,500	\$71,700
Assistant Professor	\$48,700	\$51,600	\$51,600	\$53,200	\$53,900	\$55,400	\$57,900	\$61,000	\$64,100	\$63,600
Instructor	\$41,000	\$43,800	\$45,200	\$46,800	\$45,900	\$46,900	\$50,000	\$53,200	\$53,400	\$56,500
All Ranks	\$61,600	\$65,400	\$65,700	\$67,100	\$68,500	\$70,000	\$72,300	\$75,200	\$77,200	\$77,300
Southwest Baptist University										
Professor	n.a.	(2)	(1)	(1)	(2)	(1)	(1)			
Associate Professor	\$51,000	\$49,173	\$49,372	\$48,862	\$57,000	\$49,571	\$54,966	\$56,300	\$60,100	\$60,100
Assistant Professor	\$41,200	\$40,637	\$39,687	\$40,313	\$42,700	\$42,571	\$46,858	\$48,700	\$47,700	\$47,700
Instructor	\$35,100	\$30,634	\$34,706	\$35,109	\$38,300	\$40,351	\$41,096	\$42,700	\$44,000	\$44,000
All Ranks	\$30,700	n.a.	\$29,574	\$30,148	\$32,100	n.a.	\$34,215	\$34,500	\$35,400	\$35,400
	\$39,300	\$36,402	\$38,112	\$38,641	\$43,100	\$41,245	\$43,939	\$45,100	\$46,800	
Stephens College										
Professor	n.a.	(2)	(2)	(2)	(2)	(2)	(1)			
Associate Professor	\$36,658	\$36,522	\$37,611	\$38,768	\$41,019	\$41,593	\$47,604	n.a.	n.a.	n.a.
Assistant Professor	\$33,874	\$33,955	\$34,211	\$33,684	\$36,013	\$37,217	\$38,137	n.a.	n.a.	n.a.
Instructor	n.a.	n.a.	\$30,539	\$31,018	\$32,100	n.a.	\$33,389	n.a.	n.a.	n.a.
All Ranks	\$34,280	\$35,031	\$35,502	\$36,128	\$32,581	\$39,300	\$41,417	n.a.	n.a.	n.a.
Washington University										
Professor	\$106,400	\$111,500	\$117,900	\$122,000	\$128,400	\$135,200	\$145,100	\$150,800	\$159,300	\$160,700
Associate Professor	\$67,000	\$74,000	\$78,700	\$81,000	\$85,100	\$90,500	\$93,300	\$96,400	\$96,500	\$97,100
Assistant Professor	\$64,700	\$68,000	\$69,300	\$72,100	\$72,400	\$73,400	\$77,200	\$80,000	\$85,000	\$85,400
Instructor	n.a.	n.a.	n.a.	n.a.	n.a.	n.a.	n.a.	n.a.	n.a.	n.a.
All Ranks	\$87,700	\$91,200	\$94,700	\$98,500	\$102,400	\$100,500	\$104,900	\$107,500	\$114,400	\$116,100
Webster University										
Professor	\$66,300	\$68,900	\$72,100	\$74,300	\$76,100	\$78,300	\$77,700	\$81,200	\$84,600	\$82,800
Associate Professor	\$49,500	\$52,100	\$55,700	\$57,500	\$58,600	\$59,600	\$61,700	\$63,600	\$68,200	\$67,800
Assistant Professor	\$41,000	\$43,600	\$46,800	\$47,500	\$49,000	\$49,800	\$48,700	\$49,600	\$49,900	\$52,900
Instructor	n.a.	n.a.	n.a.	n.a.	n.a.	n.a.	n.a.	n.a.	n.a.	n.a.
All Ranks	\$51,800	\$53,900	\$57,700	\$59,700	\$61,600	\$62,900	\$64,400	\$66,800	\$70,300	\$69,700
William Jewell College										
Professor	\$57,800	\$58,000	\$57,000	\$57,000	\$56,000	\$58,200	\$59,200	\$60,000	\$63,900	\$63,800
Associate Professor	\$45,900	\$47,400	\$46,100	\$46,100	\$45,900	\$48,600	\$51,400	\$56,400	\$56,600	\$59,500
Assistant Professor	\$40,300	\$40,800	\$43,800	\$43,400	\$45,100	\$44,300	\$46,000	\$46,300	\$48,500	\$50,100
Instructor	n.a.	n.a.	n.a.	n.a.	n.a.	n.a.	\$40,100	\$44,200	\$45,900	\$44,300
All Ranks	\$49,700	\$51,000	\$51,200	\$51,700	\$50,100	\$51,400	\$52,900	\$53,300	\$56,200	\$57,200
William Woods University										
Professor	n.a.	(2)	(2)	(1)	(1)	(1)	(2)			
Associate Professor	\$42,092	\$43,067	\$43,638	\$44,806	\$47,063	\$45,481	\$45,800	\$50,600	\$50,800	\$50,800
Assistant Professor	\$35,402	\$34,977	\$36,627	\$37,975	\$39,029	\$39,656	\$40,600	\$44,100	\$43,100	\$43,100
Instructor	n.a.	n.a.	\$32,964	\$33,417	\$33,804	n.a.	\$39,800	\$41,100	\$40,500	\$40,500
All Ranks	\$38,134	\$38,575	\$40,224	\$40,779	\$40,564	\$41,510	\$43,900	\$47,000	\$46,100	\$46,100
Average: Missouri Private Institutions										
Professor	\$62,873	\$57,541	\$57,910	\$59,233	\$61,164	\$63,850	\$65,936	\$66,772	\$73,913	\$72,682
Associate Professor	\$48,392	\$46,287	\$47,403	\$48,379	\$50,192	\$52,556	\$54,400	\$54,422	\$58,667	\$58,341
Assistant Professor	\$42,275	\$40,535	\$40,975	\$42,409	\$43,524	\$45,039	\$46,894	\$46,398	\$50,747	\$50,847
Instructor	\$36,900	\$34,140	\$36,783	\$35,374	\$35,923	\$36,761	\$41,236	\$39,795	\$42,778	\$44,425
All Ranks	\$49,825	\$46,138	\$47,049	\$48,353	\$49,719	\$51,178	\$53,370	\$53,366	\$59,087	\$58,588
Average: Missouri Private Institutions w/o Division I's										
Professor	\$55,589	\$52,437	\$53,085	\$54,446	\$55,860	\$58,339	\$59,987	\$60,725	\$64,769	\$64,480
Associate Professor	\$44,596	\$43,978	\$44,961	\$45,977	\$47,596	\$49,809	\$51,663	\$51,525	\$54,692	\$54,867
Assistant Professor	\$38,889	\$38,512	\$38,925	\$40,385	\$41,458	\$43,001	\$44,719	\$43,988	\$47,085	\$47,693
Instructor	\$35,533	\$33,067	\$35,089	\$34,422	\$35,210	\$35,981	\$40,264	\$39,006	\$41,450	\$41,770
All Ranks	\$43,898	\$42,792	\$44,034	\$44,908	\$45,958	\$47,592	\$50,237	\$49,997	\$52,736	\$52,442
Westminster College (MO)										
Professor	\$51,200	\$56,100	\$57,100	\$56,500	\$62,600	\$61,200	\$61,200	\$64,100	\$66,500	\$65,546
Associate Professor	\$44,000	\$48,500	\$49,500	\$50,300	\$52,800	\$54,300	\$54,800	\$55,800	\$56,400	\$55,500
Assistant Professor	\$38,400	\$42,200	\$43,700	\$42,700	\$42,800	\$42,500	\$44,200	\$45,100	\$43,400	\$46,800
Instructor	na	na	\$28,900	\$32,900	n.a.	n.a.	n.a.	n.a.	\$40,100	\$35,700
All Ranks	\$44,200	\$48,600	\$47,800	\$48,400	\$51,700	\$51,400	\$53,100	\$54,800	\$54,100	\$55,580
Westminster College (MO) as % of Average for Missouri Private Institutions w/o D-I's										
Professor	92%	107%	108%	104%	112%	105%	102%	106%	103%	102%
Associate Professor	99%	110%	110%	109%	111%	109%	106%	108%	103%	101%
Assistant Professor	99%	110%	112%	106%	103%	99%	99%	103%	92%	98%
Instructor	na	na	82%	96%	na	na	na	na	97%	85%
All Ranks	101%	114%	109%	108%	112%	108%	106%	110%	103%	106%

(1) Statistical Summary of Missouri Higher Education, (2) IPEDS, all others, AAUP Annual Report on the Economic Status of the Profession

MO Independents: Faculty Salary History and Comparison (with benefits)

		FY 01	FY 02	FY 03	FY 04	FY 05	FY 06	FY 07	FY 08	FY 09	FY 10
Avilla University											
	IIB										
	Professor	\$58,200.0	\$61,500	\$63,100	\$68,100	\$72,500	\$69,200	\$71,000	\$73,400	\$73,900	\$73,400
	Associate Professor	\$50,700.0	\$53,000	\$54,700	\$58,700	\$59,000	\$62,800	\$63,500	\$64,900	\$70,200	\$70,900
	Assistant Professor	\$45,800.0	\$47,700	\$47,900	\$51,600	\$50,900	\$54,400	\$57,400	\$59,000	\$63,700	\$65,600
	Instructor	n.a.	\$49,100	n.a.	\$47,100	\$45,200	\$48,100	\$50,200	\$53,200	\$55,300	\$57,500
	All Ranks	\$48,900.0	\$51,800	\$52,500	\$56,500	\$57,600	\$59,500	\$61,600	\$63,300	\$66,500	\$67,900
Central Methodist University											
	IIB										
	Professor	n.a.	\$58,400	\$59,600	\$62,800	\$62,000	\$63,500	\$63,600	\$66,000	\$70,300	\$73,500
	Associate Professor	n.a.	\$48,000	\$46,800	\$48,000	\$48,000	\$49,200	\$51,500	\$54,500	\$58,500	\$62,400
	Assistant Professor	n.a.	\$41,800	\$41,000	\$42,700	\$43,100	\$45,800	\$47,500	\$49,500	\$52,200	\$55,000
	Instructor	n.a.	\$33,600	\$39,700	\$25,800	n.a.	n.a.	n.a.	n.a.	\$42,300	\$44,700
	All Ranks	n.a.	\$47,600	\$48,300	\$48,700	\$49,200	\$51,700	\$53,000	\$54,700	\$57,300	\$59,900
College of the Ozarks											
	IIB										
	Professor	\$81,000	\$65,100	n.a.	\$67,000	\$68,900	\$71,300	\$71,300	n.a.	\$74,200	\$77,800
	Associate Professor	\$58,100	\$59,000	n.a.	\$62,200	\$64,000	\$64,600	\$68,100	n.a.	\$69,800	\$71,700
	Assistant Professor	\$50,200	\$52,200	n.a.	\$55,300	\$57,700	\$58,300	\$57,500	n.a.	\$60,100	\$65,000
	Instructor	n.a.	n.a.	n.a.	n.a.	\$48,500	n.a.	n.a.	n.a.	\$53,800	\$55,600
	All Ranks	\$61,900	\$57,300	n.a.	\$59,900	\$62,000	\$63,800	\$65,100	n.a.	\$67,600	\$71,000
Columbia College											
	IIB										
	Professor	\$57,500	\$59,400	\$65,300	\$71,500	\$75,400	\$77,100	\$83,500	\$86,800	\$95,800	\$99,600
	Associate Professor	\$50,300	\$53,200	\$58,300	\$62,100	\$68,400	\$69,300	\$68,000	\$71,500	\$76,400	\$79,000
	Assistant Professor	\$47,300	\$50,100	\$51,000	\$55,100	\$56,600	\$58,300	\$59,600	\$58,900	\$65,000	\$66,400
	Instructor	\$42,700	\$44,900	\$47,700	\$52,100	\$50,500	\$55,800	\$60,400	\$62,900	\$61,100	\$63,800
	All Ranks	\$50,200	\$51,500	\$54,500	\$58,700	\$60,800	\$63,600	\$65,600	\$68,500	\$73,400	\$75,600
Culver-Stockton College											
	IIB										
	Professor	\$56,900	\$59,800	n.a.	\$64,000	\$62,600	\$60,900	\$62,800	\$67,200	\$67,700	\$67,100
	Associate Professor	\$50,600	\$52,100	n.a.	\$56,300	\$54,700	\$55,200	\$56,500	\$58,000	\$57,200	\$56,500
	Assistant Professor	\$43,300	\$44,300	n.a.	\$48,900	\$48,000	\$46,500	\$49,300	\$50,100	\$50,500	\$50,100
	Instructor	n.a.	\$38,700	n.a.	\$39,300	\$39,600	n.a.	\$38,800	\$43,600	\$45,100	\$45,100
	All Ranks	\$48,100	\$49,400	n.a.	\$53,200	\$52,600	\$52,000	\$53,100	\$55,200	\$57,000	\$56,800
Drury University											
	IIB										
	Professor	\$73,400	\$78,100	\$74,700	\$77,300	\$80,500	\$86,600	\$87,900	\$87,300	\$89,500	\$91,100
	Associate Professor	\$59,300	\$65,400	\$66,100	\$64,400	\$68,600	\$70,100	\$70,500	\$68,700	\$67,900	\$68,300
	Assistant Professor	\$49,000	\$52,700	\$54,300	\$53,900	\$54,100	\$60,000	\$60,600	\$62,100	\$64,600	\$66,800
	Instructor	\$47,100	\$51,900	n.a.	\$50,700	\$52,300	\$47,900	\$47,900	\$52,000	\$47,200	\$54,300
	All Ranks	\$57,500	\$62,000	\$62,300	\$63,300	\$64,400	\$68,600	\$70,500	\$71,000	\$70,700	\$72,400
Evangel University											
	IIB										
	Professor	n.a.	n.a.	n.a.	n.a.	n.a.	n.a.	n.a.	n.a.	n.a.	n.a.
	Associate Professor	n.a.	n.a.	n.a.	n.a.	n.a.	n.a.	n.a.	n.a.	n.a.	n.a.
	Assistant Professor	n.a.	n.a.	n.a.	n.a.	n.a.	n.a.	n.a.	n.a.	n.a.	n.a.
	Instructor	n.a.	n.a.	n.a.	n.a.	n.a.	n.a.	n.a.	n.a.	n.a.	n.a.
	All Ranks	n.a.	n.a.	n.a.	n.a.	n.a.	n.a.	n.a.	n.a.	n.a.	n.a.
Fontbonne University											
	IIB										
	Professor	n.a.	\$69,900	\$71,700	n.a.	n.a.	n.a.	\$90,700	n.a.	n.a.	n.a.
	Associate Professor	n.a.	\$56,300	\$57,500	n.a.	n.a.	n.a.	\$70,400	n.a.	n.a.	n.a.
	Assistant Professor	n.a.	\$49,200	\$49,900	n.a.	n.a.	n.a.	\$59,800	n.a.	n.a.	n.a.
	Instructor	n.a.	\$44,600	\$45,400	n.a.	n.a.	n.a.	\$49,200	n.a.	n.a.	n.a.
	All Ranks	n.a.	\$52,800	\$54,200	n.a.	n.a.	n.a.	\$64,300	n.a.	n.a.	n.a.
Hannibal-LaGrange College											
	IIB										
	Professor	n.a.	\$51,700	n.a.	n.a.	n.a.	n.a.	n.a.	n.a.	n.a.	\$61,300
	Associate Professor	n.a.	\$45,400	n.a.	n.a.	n.a.	n.a.	n.a.	n.a.	n.a.	\$54,000
	Assistant Professor	n.a.	\$44,400	n.a.	n.a.	n.a.	n.a.	n.a.	n.a.	n.a.	\$50,400
	Instructor	n.a.	\$36,500	n.a.	n.a.	n.a.	n.a.	n.a.	n.a.	n.a.	\$46,800
	All Ranks	n.a.	\$44,100	n.a.	n.a.	n.a.	n.a.	n.a.	n.a.	n.a.	\$51,900
Lindenwood University											
	IIA										
	Professor	n.a.	n.a.	n.a.	n.a.	n.a.	n.a.	n.a.	n.a.	n.a.	\$81,500
	Associate Professor	n.a.	n.a.	n.a.	n.a.	n.a.	n.a.	n.a.	n.a.	n.a.	\$72,800
	Assistant Professor	n.a.	n.a.	n.a.	n.a.	n.a.	n.a.	n.a.	n.a.	n.a.	\$62,000
	Instructor	n.a.	n.a.	n.a.	n.a.	n.a.	n.a.	n.a.	n.a.	n.a.	\$70,200
	All Ranks	n.a.	n.a.	n.a.	n.a.	n.a.	n.a.	n.a.	n.a.	n.a.	\$69,100
Maryville University											
	IIA										
	Professor	\$69,400	n.a.	\$73,700	\$77,300	\$81,100	\$85,100	\$86,200	\$89,400	\$95,000	\$94,500
	Associate Professor	\$57,000	n.a.	\$61,900	\$65,400	\$71,200	\$76,200	\$78,000	\$79,200	\$81,300	\$80,900
	Assistant Professor	\$49,600	n.a.	\$55,000	\$58,000	\$62,600	\$65,700	\$65,000	\$66,500	\$69,600	\$71,200
	Instructor	n.a.	n.a.	n.a.	n.a.	\$52,400	\$56,100	\$57,500	\$56,800	\$62,000	\$62,700
	All Ranks	\$57,100	n.a.	\$62,200	\$65,200	\$68,900	\$72,500	\$72,700	\$74,400	\$71,100	\$78,500
Missouri Baptist University											
	IIB										
	Professor	n.a.	\$52,200	\$52,200	\$57,800	\$56,400	\$62,000	\$66,000	\$67,800	\$70,600	\$71,500
	Associate Professor	\$47,500	\$45,500	\$46,100	\$59,300	\$59,600	\$61,000	\$57,200	\$57,000	\$60,800	\$64,400
	Assistant Professor	\$49,500	\$51,400	\$43,500	\$50,500	\$52,800	\$51,900	\$48,300	\$51,300	\$53,900	\$54,200
	Instructor	\$42,300	\$41,800	\$43,200	\$45,700	\$47,200	\$43,500	\$46,300	\$46,400	\$51,000	\$52,500
	All Ranks	\$47,300	\$46,900	\$45,100	\$51,600	\$52,700	\$52,000	\$53,400	\$54,700	\$58,800	\$60,500
Missouri Valley College											
	IIB										
	Professor	n.a.	n.a.	n.a.	n.a.	\$54,300	\$53,600	\$56,000	\$53,100	n.a.	n.a.
	Associate Professor	n.a.	n.a.	n.a.	n.a.	\$48,700	\$48,700	\$51,600	\$52,400	n.a.	n.a.
	Assistant Professor	n.a.	n.a.	n.a.	n.a.	\$42,900	\$43,400	\$43,800	\$43,500	n.a.	n.a.
	Instructor	n.a.	n.a.	n.a.	n.a.	\$33,500	\$33,800	\$34,800	\$34,000	n.a.	n.a.
	All Ranks	n.a.	n.a.	n.a.	n.a.	\$43,200	\$42,900	\$43,700	\$43,300	n.a.	n.a.

MO Independents: Faculty Salary History and Comparison (with benefits)

	FY 01	FY 02	FY 03	FY 04	FY 05	FY 06	FY 07	FY 08	FY 09	FY 10
Park University										
Professor	n.a.	n.a.	n.a.	n.a.	n.a.	n.a.	n.a.	n.a.	n.a.	n.a.
Associate Professor	n.a.	n.a.	n.a.	n.a.	n.a.	n.a.	n.a.	n.a.	n.a.	n.a.
Assistant Professor	n.a.	n.a.	n.a.	n.a.	n.a.	n.a.	n.a.	n.a.	n.a.	n.a.
Instructor	n.a.	n.a.	n.a.	n.a.	n.a.	n.a.	n.a.	n.a.	n.a.	n.a.
All Ranks	n.a.	n.a.	n.a.	n.a.	n.a.	n.a.	n.a.	n.a.	n.a.	n.a.
Rockhurst University IIA										
Professor	\$77,800	\$79,900	\$76,000	\$75,400	\$78,400	\$80,100	\$77,200	\$77,900	\$81,400	\$82,000
Associate Professor	\$64,600	\$62,300	\$64,100	\$63,500	\$62,600	\$66,600	\$65,300	\$65,800	\$64,500	\$68,800
Assistant Professor	\$48,100	\$48,900	\$51,000	\$55,700	\$57,500	\$60,400	\$58,200	\$56,900	\$56,000	\$58,600
Instructor	n.a.	n.a.	\$43,100	\$41,500	\$45,800	\$45,000	\$43,400	\$48,000	\$43,600	\$46,700
All Ranks	\$60,300	\$60,700	\$61,500	\$62,900	\$64,400	\$67,000	\$65,200	\$64,600	\$64,100	\$67,200
St. Louis University I										
Professor	\$100,700	\$105,400	\$108,200	\$112,900	\$116,300	\$117,000	\$121,300	\$127,500	\$133,900	\$131,900
Associate Professor	\$71,900	\$75,800	\$77,000	\$81,100	\$82,600	\$84,400	\$85,900	\$91,800	\$99,000	\$95,900
Assistant Professor	\$58,600	\$63,200	\$63,700	\$66,400	\$68,100	\$70,200	\$72,100	\$76,200	\$80,700	\$80,200
Instructor	\$50,300	\$54,500	\$55,600	\$58,600	\$58,500	\$57,100	\$61,500	\$67,100	\$68,200	\$72,200
All Ranks	\$73,800	\$79,300	\$80,400	\$83,500	\$86,000	\$86,800	\$89,800	\$94,800	\$99,700	\$98,500
Southwest Baptist University IIB										
Professor	n.a.	\$62,900	n.a.	n.a.	n.a.	\$74,900	n.a.	n.a.	\$71,400	\$77,200
Associate Professor	n.a.	\$51,400	n.a.	n.a.	n.a.	\$56,100	n.a.	n.a.	\$62,800	\$62,700
Assistant Professor	n.a.	\$44,100	n.a.	n.a.	n.a.	\$50,200	n.a.	n.a.	\$54,500	\$58,400
Instructor	n.a.	\$39,000	n.a.	n.a.	n.a.	\$42,100	n.a.	n.a.	\$42,900	\$48,300
All Ranks	n.a.	\$49,100	n.a.	n.a.	n.a.	\$56,700	n.a.	n.a.	\$57,200	\$61,700
Stephens College										
Professor	n.a.	n.a.	n.a.	n.a.	n.a.	n.a.	n.a.	n.a.	n.a.	n.a.
Associate Professor	n.a.	n.a.	n.a.	n.a.	n.a.	n.a.	n.a.	n.a.	n.a.	n.a.
Assistant Professor	n.a.	n.a.	n.a.	n.a.	n.a.	n.a.	n.a.	n.a.	n.a.	n.a.
Instructor	n.a.	n.a.	n.a.	n.a.	n.a.	n.a.	n.a.	n.a.	n.a.	n.a.
All Ranks	n.a.	n.a.	n.a.	n.a.	n.a.	n.a.	n.a.	n.a.	n.a.	n.a.
Washington University I										
Professor	\$129,600	\$136,200	\$144,100	\$149,900	\$158,500	\$167,200	\$177,400	\$184,200	\$196,000	\$198,200
Associate Professor	\$82,200	\$90,200	\$95,700	\$99,200	\$103,700	\$110,500	\$113,400	\$117,600	\$118,500	\$120,100
Assistant Professor	\$75,400	\$79,600	\$81,500	\$85,700	\$87,000	\$88,400	\$92,100	\$94,900	\$100,400	\$101,900
Instructor	n.a.	n.a.	n.a.	n.a.	n.a.	n.a.	n.a.	n.a.	n.a.	n.a.
All Ranks	\$106,200	\$110,400	\$114,600	\$120,100	\$125,400	\$123,700	\$127,800	\$131,200	\$140,100	\$143,100
Webster University IIA										
Professor	\$81,400	\$86,100	\$89,500	\$92,200	\$94,200	\$99,300	\$99,000	\$104,500	\$108,800	\$107,600
Associate Professor	\$63,300	\$67,000	\$73,100	\$73,500	\$75,100	\$77,300	\$80,200	\$82,900	\$87,700	\$87,500
Assistant Professor	\$52,500	\$55,000	\$59,300	\$61,000	\$62,300	\$64,200	\$63,800	\$65,000	\$64,200	\$66,400
Instructor	n.a.	n.a.	n.a.	n.a.	n.a.	n.a.	n.a.	n.a.	n.a.	n.a.
All Ranks	\$65,200	\$68,200	\$73,500	\$75,600	\$77,700	\$80,800	\$83,200	\$86,600	\$90,300	\$89,800
William Jewell College IIB										
Professor	\$71,600	\$72,100	\$71,200	\$72,500	\$71,800	\$75,000	\$76,400	\$78,100	\$82,300	\$82,700
Associate Professor	\$55,800	\$59,300	\$58,800	\$58,600	\$58,400	\$61,900	\$64,600	\$75,900	\$70,700	\$77,100
Assistant Professor	\$52,300	\$52,000	\$55,800	\$56,100	\$59,400	\$55,900	\$58,600	\$60,800	\$55,600	\$62,400
Instructor	n.a.	n.a.	n.a.	n.a.	n.a.	n.a.	\$51,100	\$59,400	\$51,700	\$61,400
All Ranks	\$61,800	\$63,800	\$64,400	\$65,900	\$64,600	\$65,700	\$67,700	\$70,000	\$67,900	\$73,800
William Woods University IIB										
Professor	n.a.	n.a.	n.a.	n.a.	n.a.	n.a.	n.a.	\$65,400	\$71,800	\$68,200
Associate Professor	n.a.	n.a.	n.a.	n.a.	n.a.	n.a.	n.a.	\$57,200	\$62,700	\$63,200
Assistant Professor	n.a.	n.a.	n.a.	n.a.	n.a.	n.a.	n.a.	\$51,300	\$55,300	\$54,800
Instructor	n.a.	n.a.	n.a.	n.a.	n.a.	n.a.	n.a.	\$50,300	\$51,700	\$52,200
All Ranks	n.a.	n.a.	n.a.	n.a.	n.a.	n.a.	n.a.	\$55,000	\$59,000	\$58,200
Average: Missouri Private Institutions										
Professor	\$77,955	\$73,247	\$79,108	\$80,669	\$80,921	\$82,853	\$86,020	\$87,757	\$93,657	\$94,221
Associate Professor	\$59,275	\$58,927	\$63,342	\$65,562	\$66,043	\$67,593	\$69,647	\$71,243	\$74,657	\$76,193
Assistant Professor	\$51,800	\$51,773	\$54,492	\$56,992	\$56,686	\$57,600	\$59,573	\$60,429	\$63,700	\$65,614
Instructor	\$45,600	\$43,460	\$45,783	\$45,100	\$47,350	\$47,711	\$49,191	\$52,155	\$52,750	\$55,725
All Ranks	\$61,525	\$59,660	\$64,458	\$66,546	\$66,393	\$67,153	\$69,113	\$70,521	\$74,536	\$76,657
Westminster College (MO) IIB										
Professor	\$61,900	\$69,400	\$71,400	\$69,300	\$76,100	\$74,600	\$83,400	\$78,700	\$82,300	\$77,200
Associate Professor	\$54,100	\$60,500	\$62,400	\$63,100	\$65,400	\$66,900	\$67,500	\$68,800	\$70,700	\$70,600
Assistant Professor	\$48,100	\$53,200	\$55,700	\$53,400	\$53,300	\$53,100	\$55,300	\$57,000	\$55,600	\$60,300
Instructor	n.a.	n.a.	\$38,500	\$42,000	n.a.	n.a.	n.a.	n.a.	\$51,700	\$47,700
All Ranks	\$54,300	\$60,600	\$60,300	\$60,300	\$63,700	\$63,400	\$68,200	\$67,900	\$67,900	\$65,700
Westminster College (MO) as % of Average for Missouri Private Institutions										
Professor	79%	95%	90%	86%	94%	90%	97%	90%	88%	82%
Associate Professor	91%	103%	99%	96%	99%	99%	97%	97%	95%	93%
Assistant Professor	93%	103%	102%	94%	94%	92%	93%	94%	87%	92%
Instructor	n.a.	n.a.	n.a.	n.a.	n.a.	n.a.	n.a.	n.a.	n.a.	n.a.
All Ranks	88%	102%	94%	91%	96%	94%	99%	96%	91%	86%